



total height
storey clearance
TYPE DESIGN NR. 8/70

twenty four in one block
- four storeys -

S.C. 218-1 = 8'0" (1/50)

reference:

- D. 10' x 12' with 5' over door
- D. 10' x 12' with 5' over door
- W. steel window
- W. - do -
- J. 10' x 12' with 5' over door

area details

wind area / treatment : 236 sq. ft. 21.9 ft

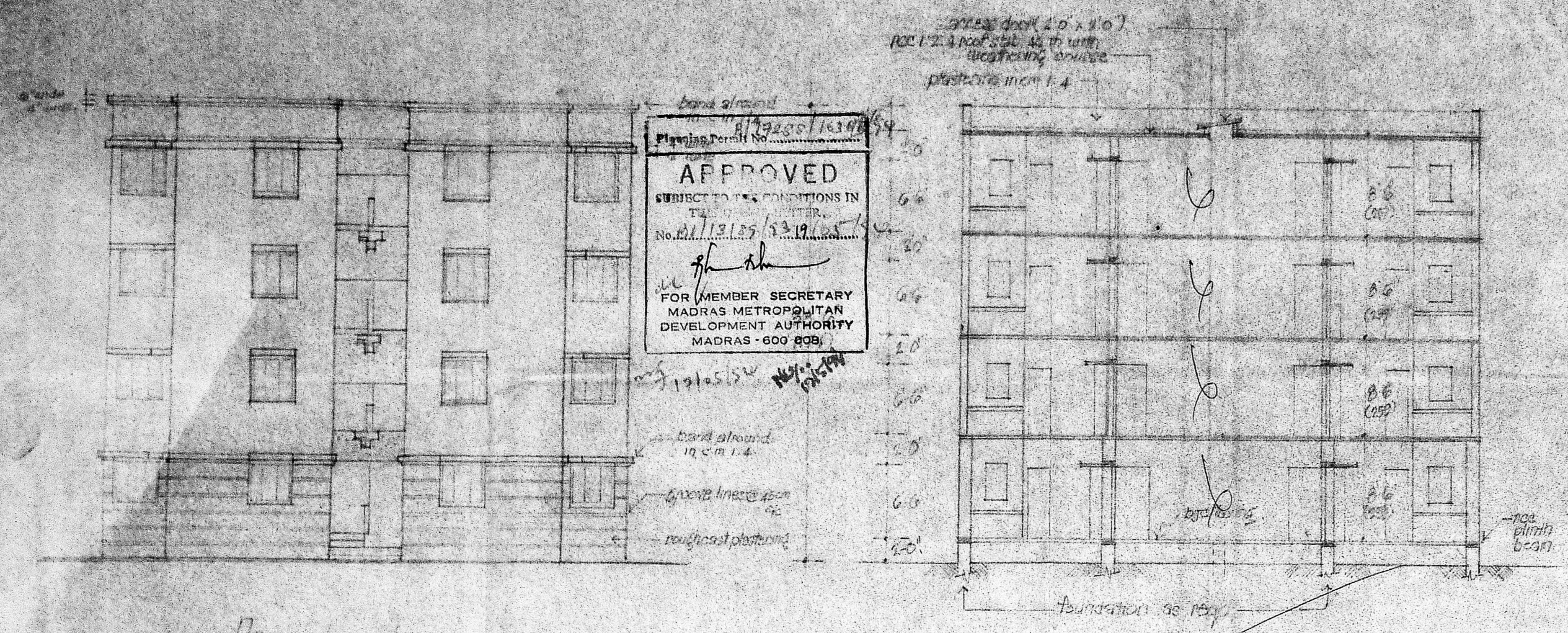
floor area: (multi purpose room)

four storeyed unit floor:

- ① ② & ③ = 12.3 m
- ③ & ④ = 12.2 m

118 typical floor:

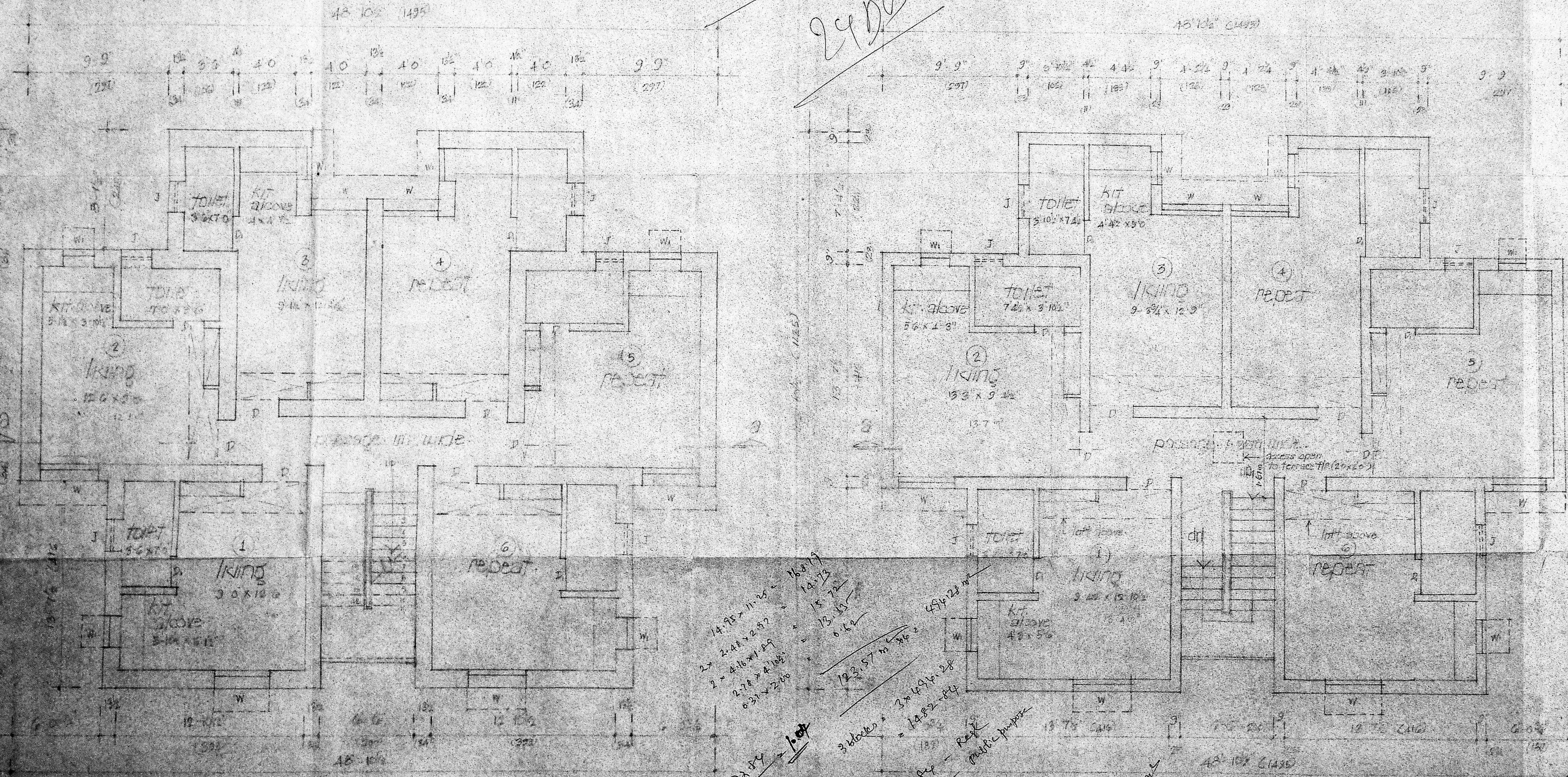
- ① ② & ③ = 13.4 m
- ③ & ④ = 13.0 m



front elevation (4 storeys)

SECTION ON B-B (4 storeys)

24 DES



Ground floor plan (4 storeys)

First floor plan (3 storeys)

scale 1/8" = 1'-0" (1/50)

14.95 x 11.25 = 168.19
 2 x 2.48 x 2.97 = 14.73
 2 x 4.16 x 1.49 = 12.42
 2 x 2.78 x 4.16 = 23.11
 0.31 x 2.06 = 0.64
 123.57 m²
 3 blocks x 3 x 14.91 x 2.8 = 1482.84 = R.C.C. frame
 16.72 x 24 = 401.28
 16.72 x 24 = 401.28
 16.72 x 24 = 401.28

JOHN...
 DESIGNER
 ARCHITECT

ARCHITECT ENGINEER